

# Bencox M Stem

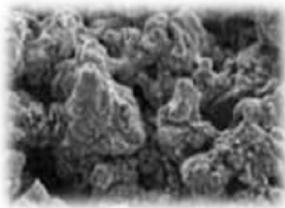


## Rotational Stability

**Flat body** in anterior-posterior view resists to rotation of the implant in the canal.



## Clinically proven TPS coating



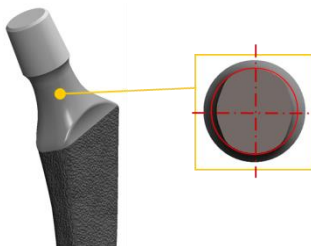
### Ti-Plasma spray coating

The microporous pure titanium coating with pores of 50-200 $\mu$ m diameter and more than 30% porosity leads to direct bone apposition for secondary stability.

## Wide range of motion

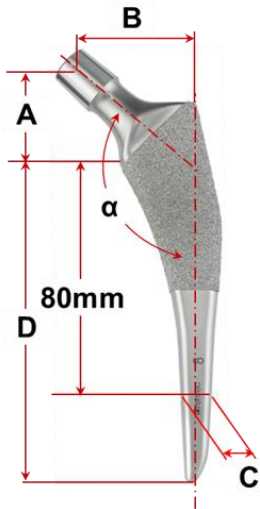
### Unique Neck Geometry

The innovated trapezoidal neck design allows wide angulation and protects impingement and dislocation



<b>Femoral Stem</b>	Bencox M Stem #11	
<b>Acetabular Cup</b>	Bencox Mirabo Cup 54mm	
<b>PE Liner</b>	36/44 Standard type	36/44 Elevated type (15°)
<b>Metal Head</b>	36M	
$\Sigma$ flex/ext	145°	129°
$\Sigma$ abd/add	141°	141°
$\Sigma$ int/ext rot	242°	216°

## Specifications



Size	$\alpha$ [CCD]	A [mm]	B [mm]	C[mm]	D[mm]
8	132	30	36	8	95
9		30.5	37	9	97
10		31	38	10	99
11		31.5	39	11	101
12		32	40	12	103
13		32.5	41	13	105
14		33	42	14	107
15		33.5	43	15	109
16		34	44	16	111
17		34.5	45	17	113
18		35	46	18.5	115
20		35.5	47	20	117
21	36	48	21.5	119	

**Material: Forged Ti6Al4V ELI (ASTM F136)**

## Ideal choice for minimal invasive surgery

- ▶ **Reduced lateral shoulder** allows less bone resection and preservation of soft tissue.
- ▶ **Reduced stem length Thin anterior-to-posterior width** allows to minimize the amount of distal canal remove.
- ▶ **Curved distal tip** can pomote easier and more smooth insertion into the femoral canal.



# Bencox M Stem



Size	Part No.
8	HA.F22.0008
9	HA.F22.0009
10	HA.F22.0010
11	HA.F22.0011
12	HA.F22.0012
13	HA.F22.0013
14	HA.F22.0014
15	HA.F22.0015
16	HA.F22.0016
17	HA.F22.0017
18	HA.F22.0018
20	HA.F22.0020
21	HA.F22.0021

**Manufacturing Plant** 12, Yeongsanhong 1-gil, Ipjang-myeon, Seobuk-gu, Cheonan-si, Chungcheongnam-do, Korea  
Tel : 82-41-585-7114 Fax : 82-41-585-7113

**Seoul office** 483, Gangnam-daero, Seocho-gu, Seoul, Korea Tel : 82-2-3445-5492~5 Fax : 82-2-3445-5467,5497

**Corentec America** 17305 Von Karman Ave. Suite 114, Irvine, CA 92614, USA Tel : 1-949-379-6227 Fax : 1-949-387-5716

**EC Representative : Emergo Europe** Molenstraat 15, 2513 BH, The Hague, The Netherlands Tel : 31-70-345-8570 Fax : 31-70-346-7299

<http://www.corentec.com>